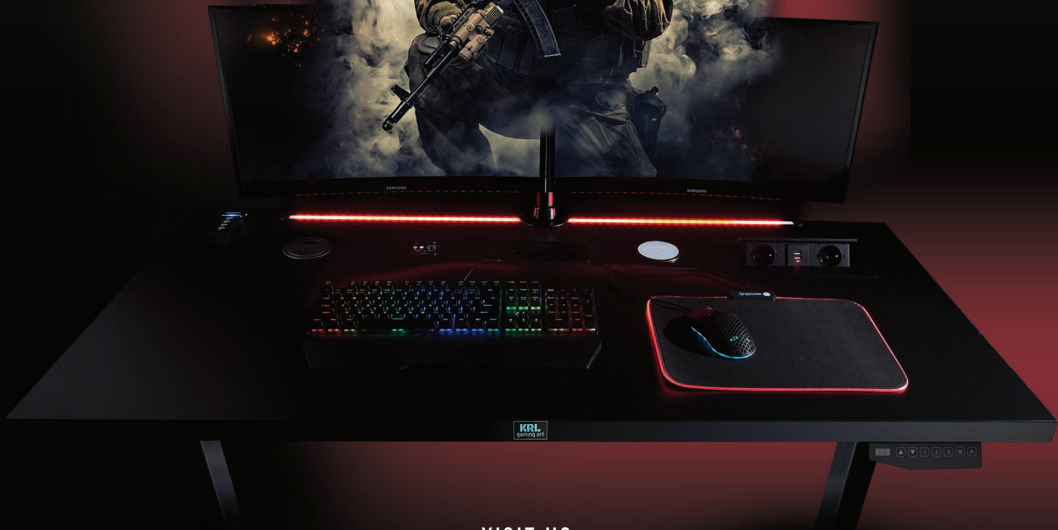




INSTRUCTION

ASSEMBLY AND USE



VISIT US:
www.gamingart.eu

I. Unpacking

Do not take the desk top out of the packaging, you can tighten the legs or the frame conveniently.

Unpack the legs or the rack from the enclosed package.

Also take out the cardboard box with accessories for the equipment.

II. Installation

If your desk has:



ROUND LEGS

Screw the legs firmly to the aluminum bases mounted to the table top.



FRAME WITH A BEAM

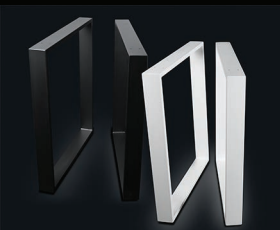
Frame in a separate package. Take the instructions out of it and follow the information contained therein. Place the assembled frame against the table top so that the holes match the drilled places. Screw the rack.



ELECTRIC RACK

Rahmen in separatem Paket. Entnehmen Sie dieser die Anleitung und befolgen Sie die darin enthaltenen Informationen. Legen Sie den zusammengebauten Rahmen so gegen die Tischplatte, dass die Löcher mit den gebohrten Stellen übereinstimmen. Schrauben Sie das Gestell.

Tighten all screws carefully!



STEEL FRAMES

Take it out of the separate package and screw it with the supplied screws to match the colored markings on the table top and frames. The screws are in the small accessories package.

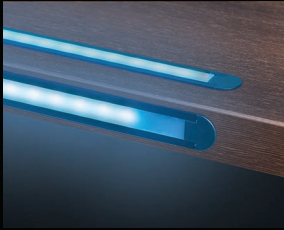
Then, with the help of a second person, grasp the table top by the short sides and set the desk to the use position. If possible, level the rack feet well.

IMPORTANT! Do not drag the desk across the floor (risk of loosening tightened elements and loss of stability). With the help of a second person, lift the desk and move it to its destination.

III. Equipment



INSTRUCTION
ASSEMBLY AND USE



LED ILLUMINATION

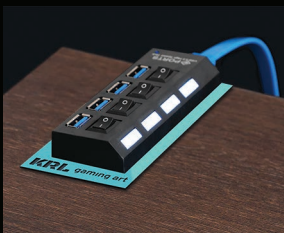
RGB LEDs have an attached power supply and a WI-FI remote control with the ability to change colors and lighting modes.



RECESSED SOCKET

Plug in to electricity.

Carefully! Installation and connection to the power supply network should be performed only by a person with appropriate qualifications and authorizations due to the existing risk of electric shock..



USB HUB

Connect to the computer with the included cables.



ICY BOX ALL IN 1

Connect to the computer with the included cables.



INDUCTIVE CHARGER

Connect the device to the power supply with the supplied cables.

visit us:
www.gamingart.eu

IV. Use

The desk should be used in a room that guarantees protection against weather conditions. The air humidity must not exceed 70% and the room temperature should be in the range of 15-30 °C. The desk should be protected against direct sunlight.

You should take care of the fronts and the desk top so that they are not exposed to rubbing against any element. Hot objects must not be placed directly on the worktop. Protect the desk from exposure to water. The worktop is best cleaned with a damp cloth, and then dried by wiping with a soft, dry cloth. If in doubt as to how to use the desk, contact the manufacturer before taking any action not described in this manual.

Carefully! Installation and connection to the power supply network should be performed only by a person with appropriate qualifications and authorizations due to the existing risk of electric shock.

V. Service



LED ILLUMINATION

Please check if the red LED on the remote control is lit after pressing the button (a protective transparent battery paper may be inserted and must be removed).

In some cases, you need to program the remote control from scratch.

Remote control programming manual:

- please disconnect the power supply for approx. 4 seconds
- please connect the power supply and simultaneously press two on the remote control extreme buttons - "color minus" and "bright minus" (we only have 3-4 seconds from reconnecting the power supply, if it is not done on time this must be repeated)
- after pressing these buttons together, the LEDs must blink white once, this will indicate that the remote is programmed and working.

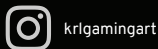
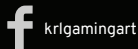


ELECTRIC RACK

If for any reason the electric rack stops working and the programmer displays information other than the height of the desk, restart.

Reboot instruction:

- Press and hold buttons "3" and "M" together for about 10 seconds or until a beep is heard
- then immediately press the "arrow down" button and hold until it goes all the way down and the program selector points to desk position again.



KRL gaming art

Owocowa 1 Street
55-002 Lany
Poland

☎ 48 531 579 768

✉ service@gamingart.eu